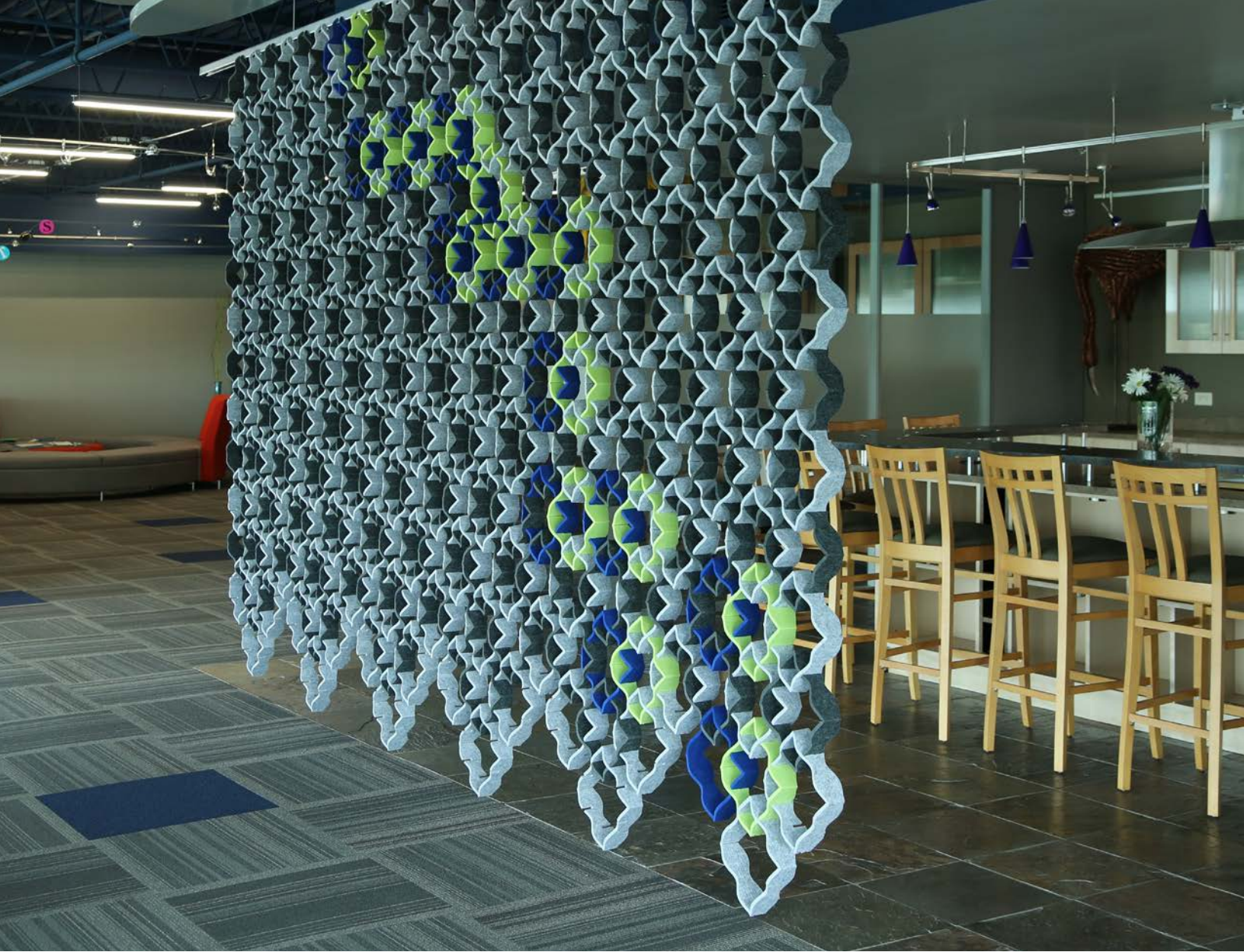


A close-up, macro shot of artificial turf. The blades are in various shades of green, blue, and grey, creating a textured, layered appearance. The focus is sharp on the blades in the foreground, while the background is blurred.

Phase

by

T U R F™



Phase

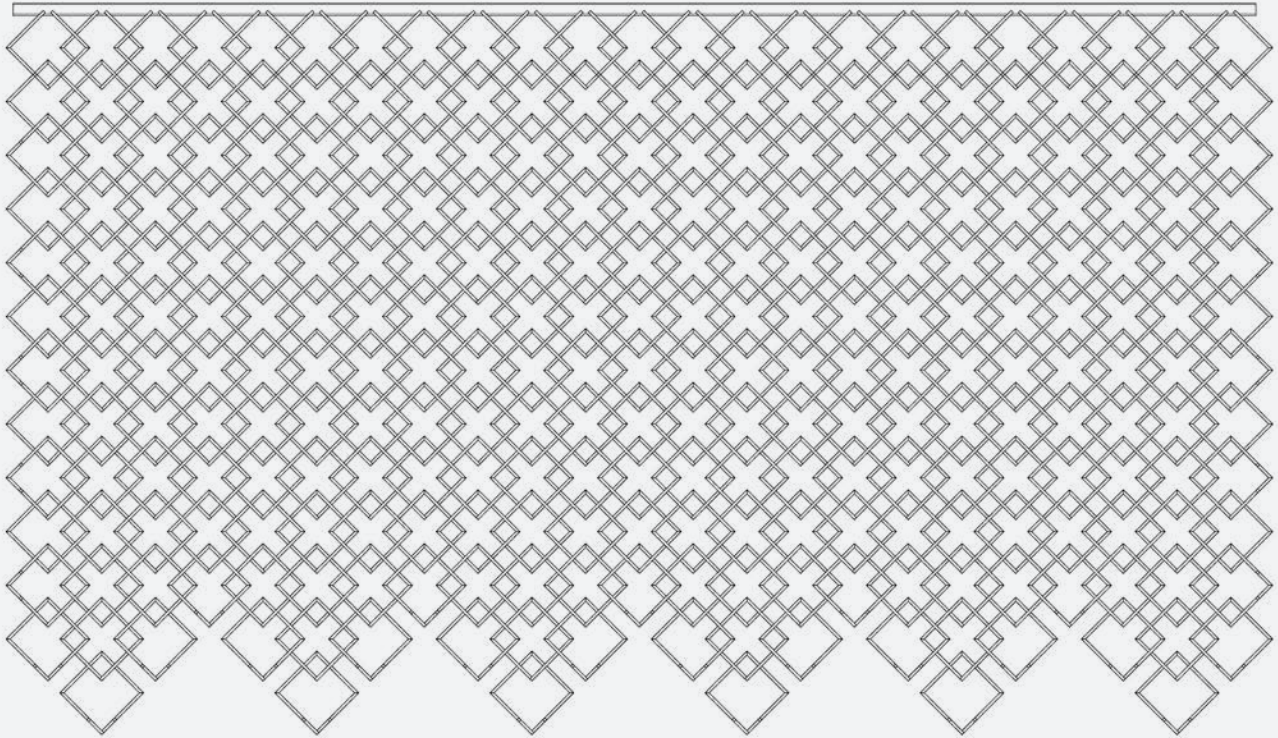
DYNAMIC & TRANSFORMATIVE

Phase is a suspended space divider made from interlocking pieces of felt. With the felt connector piece, users can connect to a standard piece of Unistrut, allowing them to link multiple modules together to create a unique and customizable space partition wall. With the option for multiple colors, Phase is a perfect way to enhance aesthetics, control acoustics, and define different zones within an open floor plan.

Assembly

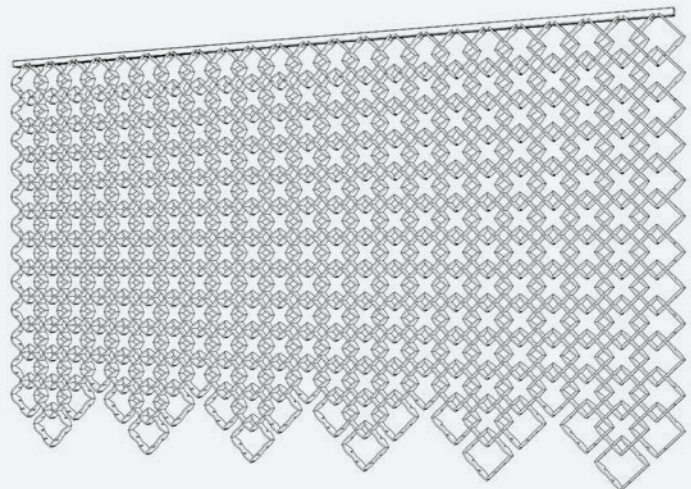
FRONT ELEVATION

From straight on, Phase appears as two interlocking diagonal grids, allowing maximum light transmission through the partition.



FRONT PERSPECTIVE

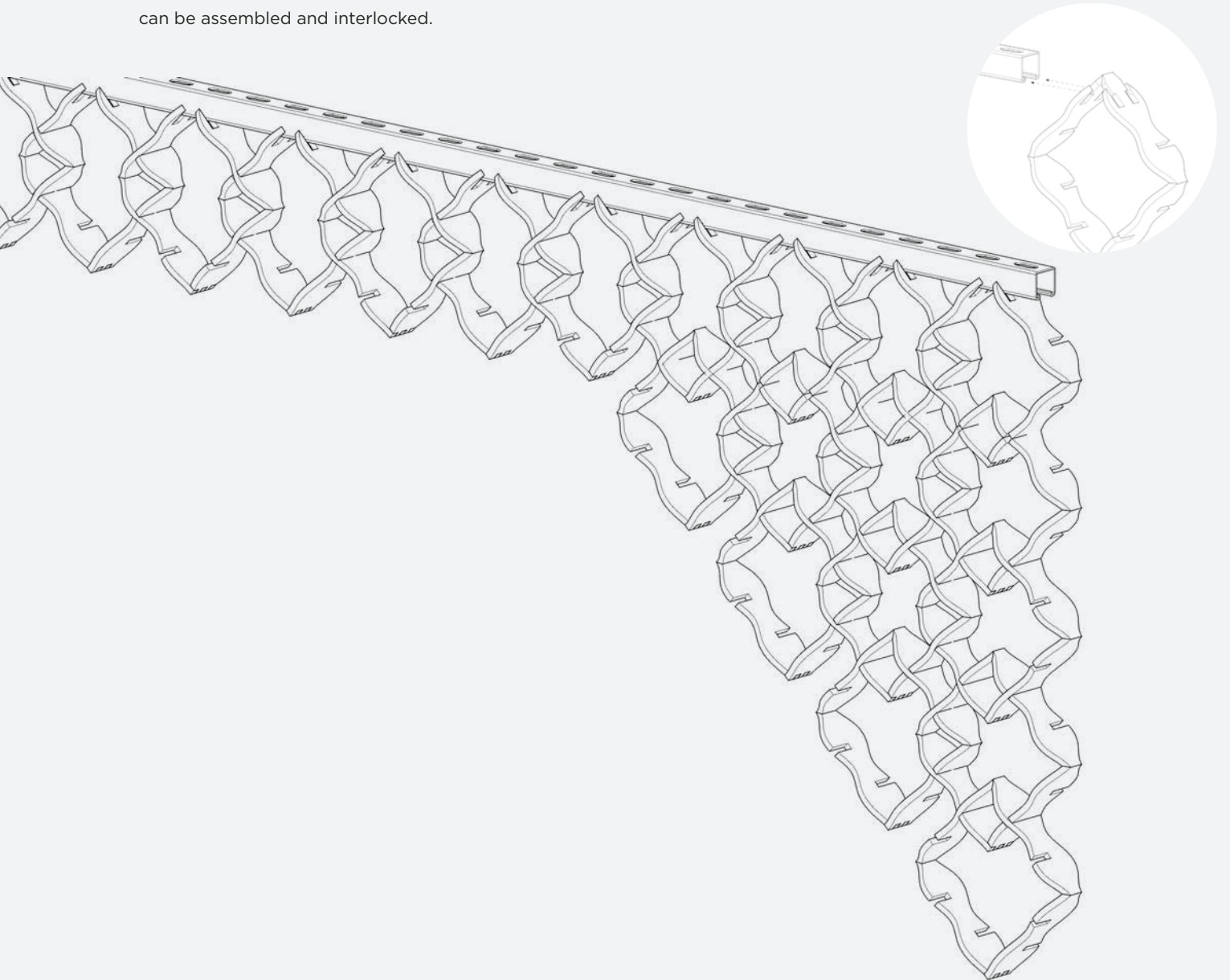
As the viewer moves to the side of Phase, the visibility through the structure is reduced. This results in a **dynamic and transformative space divider system**.



Installation

DIAGRAM 1

The felt connector **piece can either slide or fold into place on a piece of standard Unistrut.**
Once installed, the standard Phase grid pieces can be assembled and interlocked.



Specifications

PRODUCT NAME	Phase (patent pending)
CONTENT	99% Recycled Polyester Felt
FELT THICKNESS	9mm
PANEL THICKNESS	3"
STANDARD SIZE	11"X 11"
MAXIMUM SIZE	11"X 11"
EDGE OPTIONS	Exposed Felt
COMPONENTS	Unistrut PT1000
DURABILITY	Contract
MAINTENANCE	Vacuum occasionally to remove any particulate matter and air-borne debris or dust. Compressed air can be used to dust the material in difficult to reach areas or for large assemblies.
LEAD TIME	Shipped in 4 weeks.
ENVIRONMENTAL	9mm PET felt board is made from over 99% recycled polyester plastic, over 50% of which come from recycled water bottles. TURF is pursuing product transparency for LEED V4 MR Credit 4 Option 1, and MR Credit 3 Option 2 for recycled content. TURF is pursuing a Declare Label for this product.
VARIATION	PET Felt uses a traditional 'felting' process to create it's panels. This often results in a pleasing heathered' effect, where multiple tones are present in the fiber. Slight and consistent variations in color should be expected when using this sustainable material.
ACOUSTICS	ASTM C 423: NRC [500hz] = .76 NRC [1000hz] = 1.00
FIRE RATING	UL tested ASTM E-84: Class A

9MM Felt Colors



5 WHITE



1 CREAM



4 LIGHT GREY



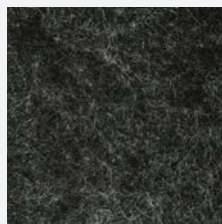
48 LIGHT BROWN



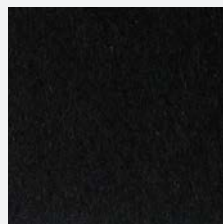
32 BROWN



38 MATTE GREY



6 CHARCOAL



7 BLACK



45 YELLOW



20 MANGO



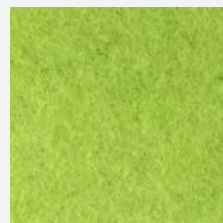
42 ORANGE



16 RED



39 LAVENDER



47 LIME



14 GREEN



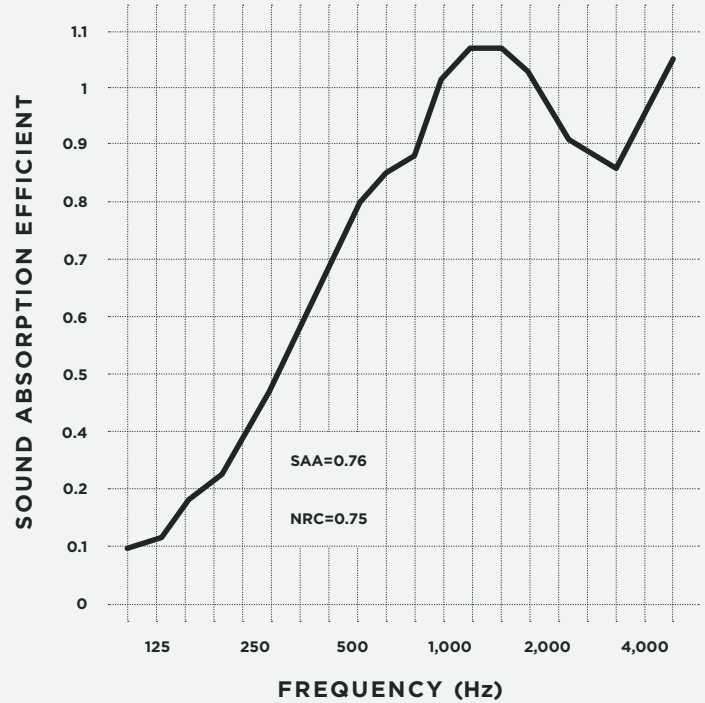
25 LIGHT BLUE



29 DARK BLUE

Acoustic Testing (ASTM C 423)

FREQUENCY (Hz)	SOUND ABSORPTION COEFFICIENT
32	.03
40	.01
50	-.02
63	-.07
80	.06
100	.09
125	.12
160	.20
200	.24
250	.33
315	.45
400	.59
500	.76
630	.85
800	.89
1,000	1.00
1,250	1.06
1,600	1.06
2,000	.99
2,500	.89
3,150	.83
4,000	.94
5,000	1.04
6,300	1.00
8,000	1.05
10,000	1.07
12,500	1.07



TEST ARRANGEMENT

PET Acoustic panel +100mm air layer (Filled with 50mm rock wool board).